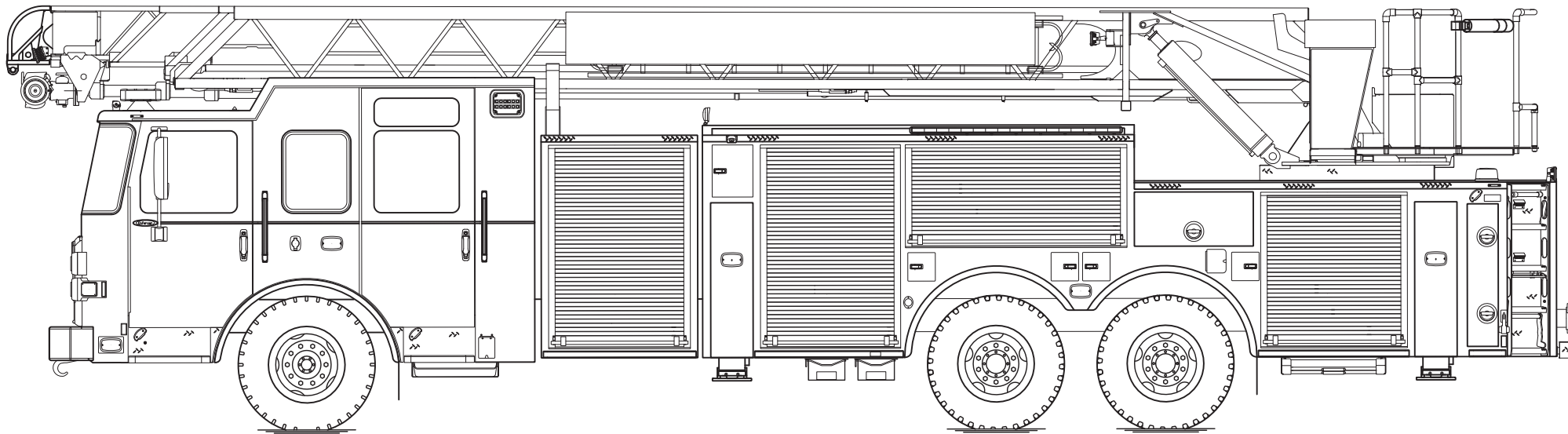




PERFORM. LIKE NO OTHER.™

Enforcer™ Low Profile Cab 100' Heavy-Duty Steel Aerial Ladder



Chassis

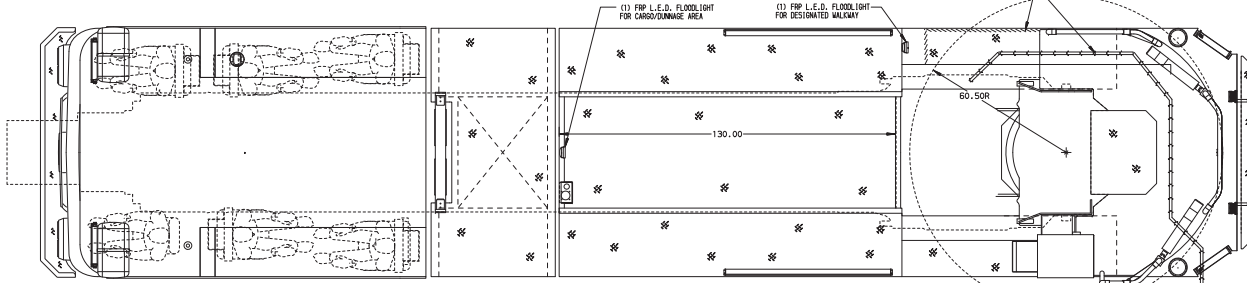
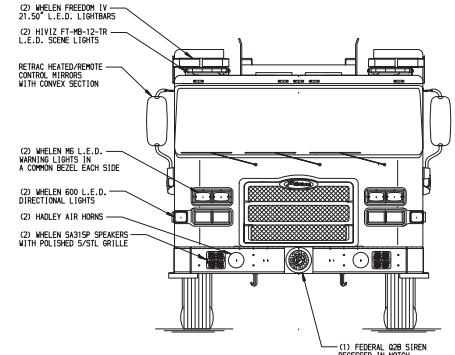
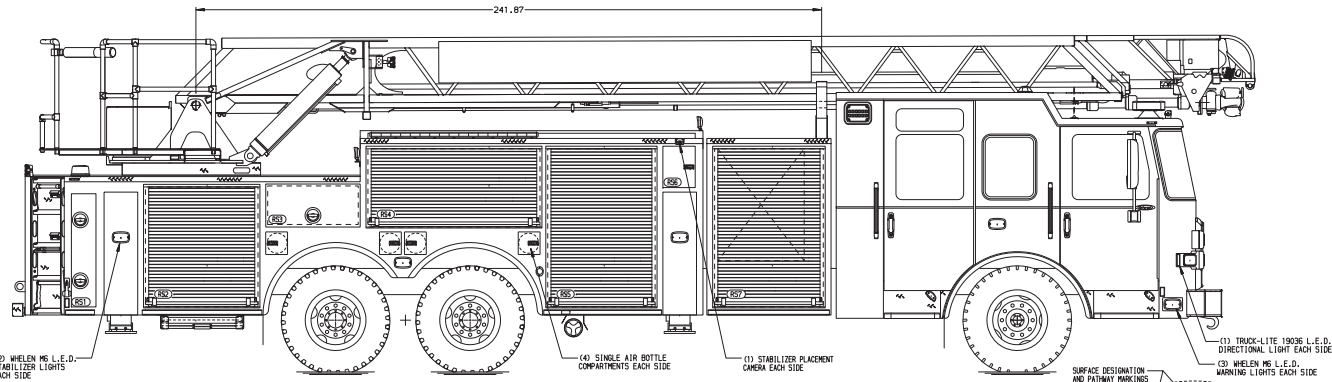
Chassis	70" Enforcer Low Profile cab w/10" raised roof
Seating Capacity	6
Overall Height	10' 10"
Overall Length	40' 0.5"
GVW Rating	67,500 lb
Safety	Side Roll and Frontal Impact Protection
Front Axle	Meritor FL-943, 19,500 lb
Rear Axle	Meritor RT46-160, 48,000 lb
Engine	PACCAR MX13 , 510 hp, 1850 lb-ft
Electrical	Command Zone™ Advanced Electronics System

Body

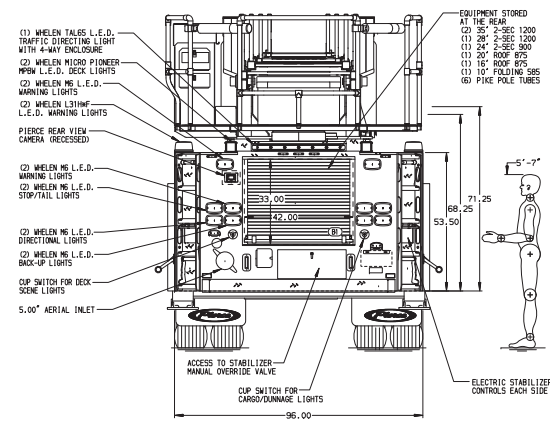
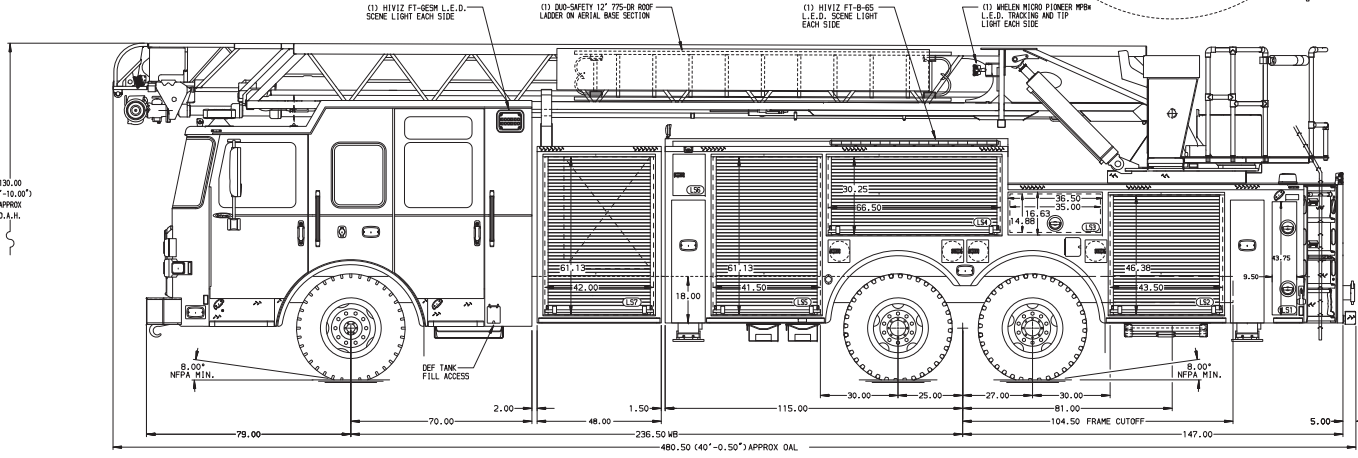
Material	Aluminum
Shelving	Adjustable, up to 500 lb
Doors	Rollup

Aerial Device

Device	100' Heavy-Duty Steel Ladder
Reach	100' vertical 93' horizontal
Tip Load	750 lb dry 500 lb wet
Equipment	100 lb allowance
Flow Rate	1,500 gpm
Stabilizers	2 sets, 16' spread 2 down-jacks



BODY
 100' LSL, Tandem Axle Aluminum Body
COMPT, LEFT SIDE FRONT
 FH/FD RollUp Forward w/o Chute
COMPT, LEFT SIDE REAR
 FH/FD RollUp and Lift-up Rearward
COMPT, RIGHT SIDE FRONT
 FH/FD RollUp Forward w/o Chute
COMPT, RIGHT SIDE REAR
 FH/FD RollUp and Lift-up Rearward



CHASSIS Enforcer Chassis 510 HP Paccor MX13 Engine	CAB 7010 Enforcer Lowered w/Notch BUMPER 10\" Extended Painted Steel	AXLE, FRONT, CUSTOM 19,500 lb Meritor Axle	TRANSMISSION Allison 6th Gen, 4000 EVS P	COMPARTMENT-NO PUMP 48\" Wide w/RollUp Door	SAFETY Side Roll and Frontal Impact Protection
		AXLE, REAR 48,000 lb Meritor Axle	GENERATOR Generator Not Required		

NFPA 1900 (2024) COMPLIANT

NOTE
 DIMENSIONS SHOWN ARE APPROXIMATE AND ARE SUBJECT TO MINOR DEVIATIONS AS MAY OCCUR OR BE NECESSARY IN CONSTRUCTION.
 MINOR DETAILS NOT SHOWN.

- 14.00\" AERIAL LIMITED RETRACTION
- SHOULDER RECEIPTABLE WITH ROSSMAN AUTO-EJECT LOCATED ON DRIVER SIDE OF THE CAB
- AIR INLET WITH DISCONNECT COUPLING IN THE DRIVER SIDE STEPNELL FORWARD POSITION
- BATTERY CHARGE INDICATOR LOCATED BEHIND DRIVER'S SEAT
- BATTERY CHARGE INDICATOR LOCATED ON DRIVER'S SEAT RISER
- FOUR ADJUSTABLE SHELVES LOCATED IN COMPARTMENTS PER ORDER
- FOUR FLOOR MOUNTED SLIDE-OUT TRAYS LOCATED IN COMPARTMENTS PER ORDER
- ONE ADJUSTABLE TOOLBOARD ADDED TO 2-WAY SLIDE-OUT TRAY PER ORDER
- ONE ADJUSTABLE SWITCH-OUT TOOLBOARD LOCATED IN COMPARTMENT PER ORDER
- ONE 2-WAY ADJUSTABLE SLIDE-OUT TRAY LOCATED IN COMPARTMENT PER ORDER

- TWO 6-PLACE RECEIPTABLE STRIPS LOCATED PER ORDER
- 12\" INCH TO AERIAL TIP
- AERIAL PEDESTAL NOT RAISED
- LIFTING THE ROPE RESCUE ATTACHMENT AT AERIAL TIP
- TRIDENT STEPS AT AERIAL DEVICE
- L.E.D. LIGHTING ON AERIAL LADDER SECTIONS
- 2-WAY INTERIOR SYSTEM BETWEEN AERIAL TIP AND TURNABLE

REV	DATE	BY	CH	ENFORCER
30SEP24		SHU	JLL	
22JUL24		SHU	AST	
18JUL24		SHU	JLO	

Pierce MANUFACTURING INC.		JOB NO.	42519
		SCALE	1:24
		DATE	
CHASSIS DATA		TITLE	100' LSL AERIAL LADDER AND BODY ASSEMBLY
MAKE		FOR	PIERCE FIELD UNIT
PIERCE			APPLETON, WI
MODEL		DWG	
NO.		NO.	42519AD
		SHEET NO.	D
		SHEET OF	1 OF 1